



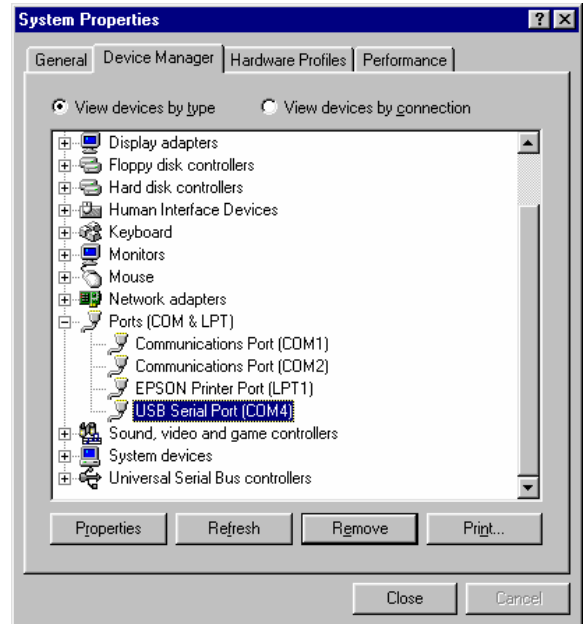
Using ESCORT Console with USB to Serial Port Adapter



To connect you ESCORT logger to your PC, you need a free serial port (COM Port, DB9). If there is not serial port available, you can use a USB to Serial Port Adapter (available from ESCORT as JA-USB-SER or at your local electronics store) to convert a free USB port into a serial port. The following instructions are compiled to help you set up your PC and the ESCORT Console software correctly when using a converter.

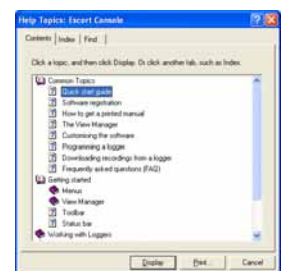
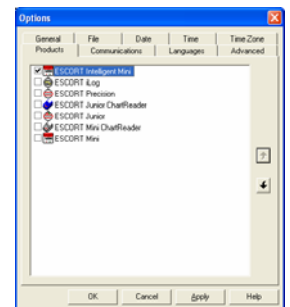
1) Install the USB to Serial Port Adapter

- ❖ To check if you have a free serial port, open the Device Manager (Click Start, go to Control Panel, choose System, in Hardware tab click on Device Manager) and look up which COM ports are available
- ❖ Connect your USB to serial port adapter to a USB port on your computer
- ❖ Do **not** connect the logger yet
- ❖ Install the USB to serial port adapter
 - Follow Installation Manual delivered with the adapter
 - Simplified instructions for JA-USB-SER:
 - Restart your computer
 - Run the Add New Hardware Wizard (In case it does not start automatically, click Start, go to Control Panel, choose Add Hardware) to assist you in setting up the new device
 - Insert the USB-Serial cable software driver into the CD-ROM drive and locate the driver on the CD-ROM drive **D:\USB 2.0 TO RS232 Cable\pc driver** (D: represents CD-ROM)
 - Complete installation using the Add Hardware Wizard
- ❖ Once the USB to serial port has been successfully installed, restart your computer
- ❖ See the Device Manager (screenshot on right) to check which number was assigned to the new COM port **USB Serial Port**



2) Install ESCORT Console

- ❖ Download ESCORT Console Standard software from the Internet or insert your software CD JA-SWP-WIN into your CD Rom drive
- ❖ Follow the on-screen instructions taking you through the installation process. Read the warnings and information carefully
- ❖ Open ESCORT Console
- ❖ Choose the COM port your data loggers will be connected to. This dialog appears automatically when you first install ESCORT Console. If you have already used Console before, go to the Edit menu and choose the command Options. In the Communication tab you can select the correct COM port.
- ❖ Tick the ESCORT products you want to use. This dialog appears automatically when you first install ESCORT Console. If you have already used Console before, go to the Edit menu and choose the command Options. In the Products tab you can select the ESCORT products you wish to use and put them into the sequence in which ESCORT Console will search for them
- ❖ Read tips of the day. Turn off this feature by ticking the box on the bottom if you do not wish to see those tips in the future
- ❖ The help file is the ESCORT user manual. Go to the Help menu and choose the command Help Topics. If you use ESCORT products for the first time, have a look at the "Quick Start Guide" in the Common Topics





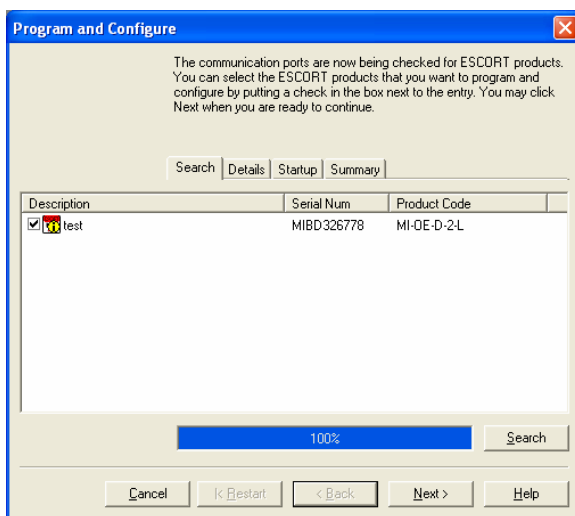
Using ESCORT Console with USB to Serial Port Adapter

ESCORT

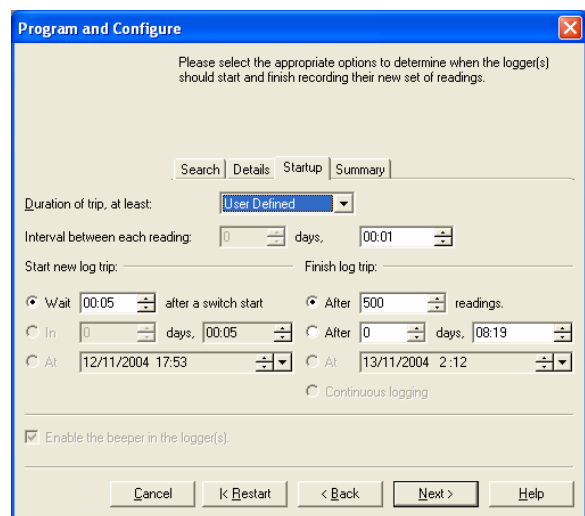
DATA LOGGING SYSTEMS

3) Program your ESCORT logger

- ❖ Open ESCORT Console
- ❖ Connect your to the COM port chosen in Console. Please note some loggers require a PC interface for this connection.
- ❖ In the Action menu, choose the Program and Configure command
- ❖ Follow the on-screen instructions
 - If a password is required, the logger is not automatically ticked. Before you can click Next, at least one product needs to be ticked. You will be asked to provide the password when you try to tick the logger.



Example: Intelligent Mini logger ticked



Example: Intelligent Mini startup programming

Start your data logger

- ❖ Manual Start: Swipe the magnet across the label until a beep is heard, or press the START button for at least 1 second. If the start delay is enabled, the logger will wait for the specified time after the manual start before the recording cycle begins.
- ❖ Automatic Start: The logger will start automatically at the specified time and date
- ❖ The logger will only stop recording once the program has been completed. The battery can be changed during recording without interrupting the logging cycle

Download data from your logger

- ❖ Open ESCORT Console
- ❖ Connect your to the COM port chosen in Console. Please note some loggers require a PC interface for this connection.
- ❖ In the Action menu, choose the Download command
- ❖ Follow the on-screen instructions
 - If a password is required, the logger is not automatically ticked. Before you proceed, at least one product needs to be ticked. You will be asked to provide the password when ticking the logger.
 - You can view the data in list and graph format by double-clicking the appropriate view in the Views tab on the left hand side of the screen
 - You can combine readings of different data loggers with ESCORT Console Professional by ticking another logger in the Links tab
 - You can view add formula calculations in Console Professional by ticking the corresponding formula in the Analysis tab

